

**Begur**

search for property CAT-500027



PORTA MONDIAL®

Your home. Our passion.

## Unique house in a prime location in Begur

constructed area:	320 m <sup>2</sup>	swimming pool:	-
plot area:	525 m <sup>2</sup>	energy certificate:	in process
bedrooms:	2		
bathrooms:	1.5		
sea view:	-	<b>price:</b>	<b>€ 450,000.-</b>



**Begur**

search for property CAT-500027



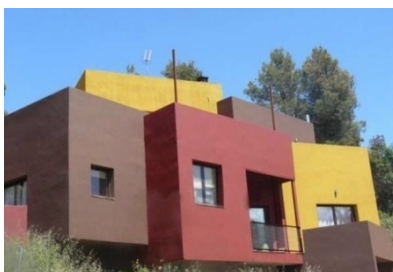
## Details:

On the entry level there is a living - & dining room with a huge sliding windows leading to a large terrace. Furthermore, an open kitchen, a storage room and a guest toilet is located there. The ground floor offers his salon, which has a direct access to the terrace. There are also 2 double bedrooms and a fully bathroom with a shower. The lower floor has a double bedroom, a machine room and a garage that provides you a direct access into the house.

The house offers breathtaking panoramic-view of the country and the mountains. For your car there is a large garage with plenty of space. The entire property is fenced and secured. Furthermore, there is the possibility to build a pool.

# Begur

search for property CAT-500027



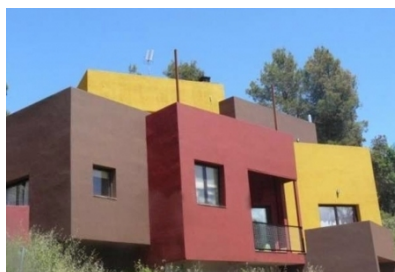
## Location & surrounding area:

Magnificent detached house in in the beautiful area of "Residencial Begur". Begur is a town situated in the heart of Empordà, close to the Cap de Begur, between the Mountains of Gavarres and the sea. The peerless town and its beaches are one of the most wonderful places on the Costa Brava. You can contemplate the impressive hills of the Begur Massif and its extensive coastline washed by the Mediterranean Sea. You can also visit Begur's old town with its numerous monuments (including its symbol: the medieval castle's impressive silhouette), its 8 coves and small crystal clear beaches, and the Romanesque center of the village of Esclanyà; which make Begur an unbeatable place to visit.

The ancient fishing quarters, by the beach, have become important residential and tourist areas. These include Aiguablava, where we have an excellent Parador de Turismo, a small marina, and Sa Tuna beach, between the sea and the mountain. Up to the mountain and the castle road you can enjoy scenic views to the sea and the mountains: Sa Riera, Aiguafreda, Sa Tuna, Platja Fonda, Fornells and Aiguablava; the most beautiful bays on the coastline of Begur.

Begur

search for property CAT-500027



PORTA MONDIAL®

Your home. Our passion.



Beautiful dining room



Fully equipped bathroom



Spacious garden



Sun-terrace with seating